


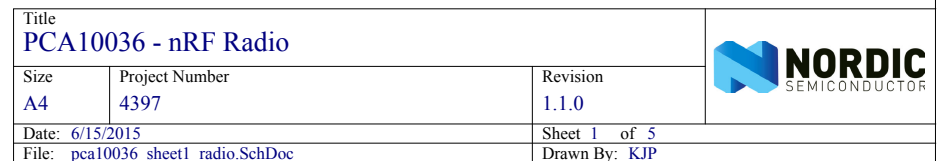
Nordic Semiconductor ASA

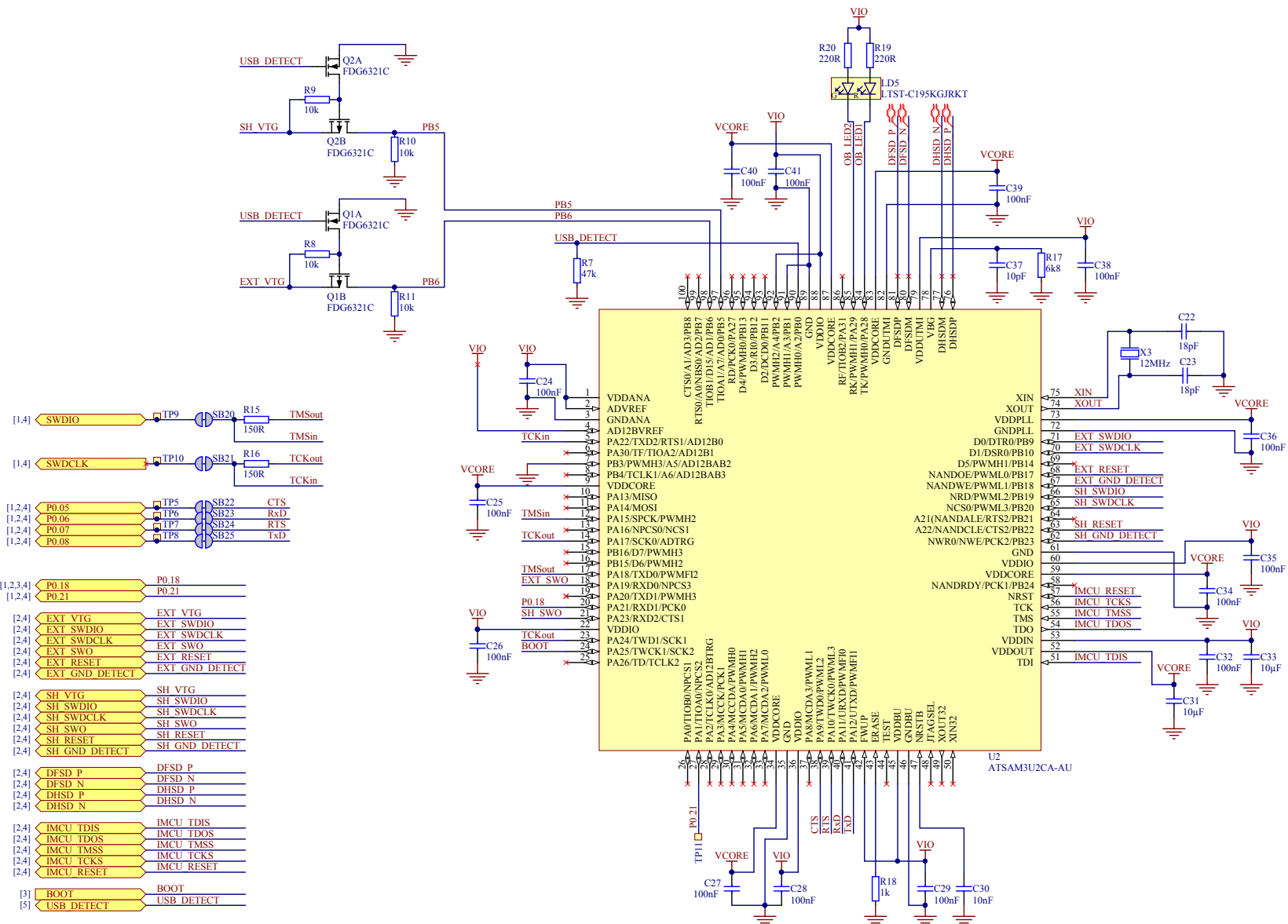
nRF52832 Bluetooth Smart/ANT/2.4GHz RF Preview Development Board (PCA10036)

Sheet 1:	nRF Radio
Sheet 2:	Interface MCU
Sheet 3:	Buttons and LEDs
Sheet 4:	Connectors
Sheet 5:	Power Supply




PCA10036 - Cover			
Size	Project Number	Revision	
A3	4397	1.1.0	
Date: 6/2/2015		Sheet 0 of 5	
File: pca10036_sheet0_cover.SchDoc		Drawn By: KJP	

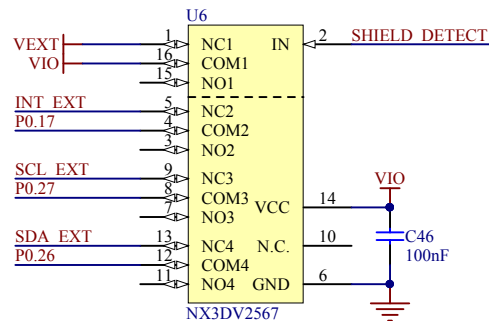
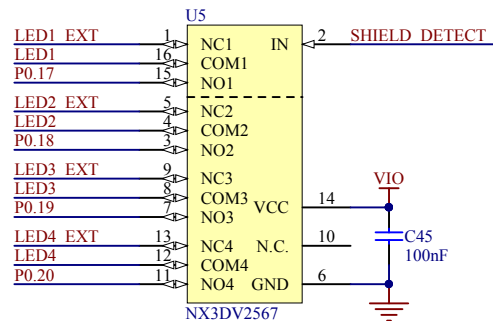
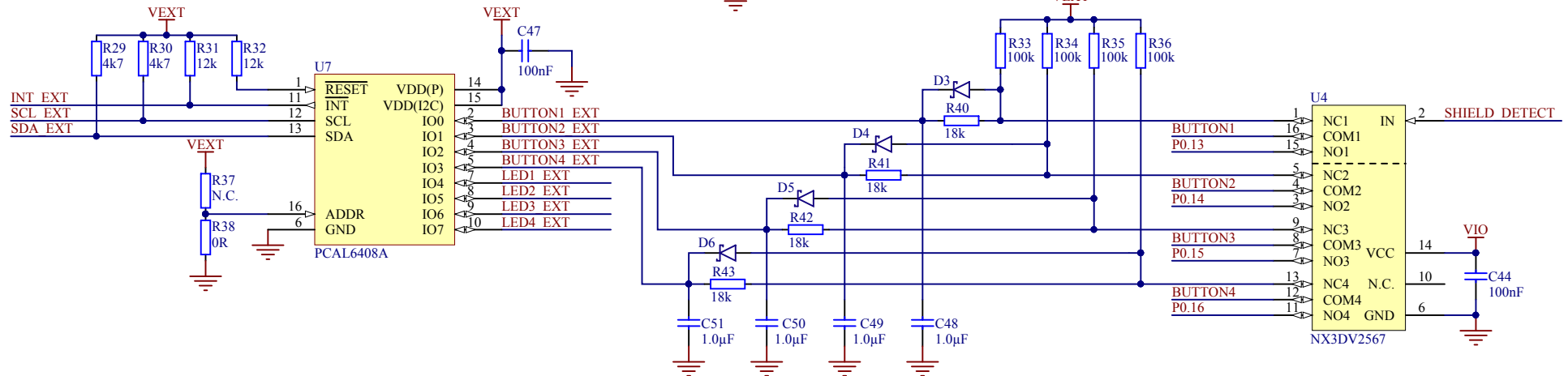
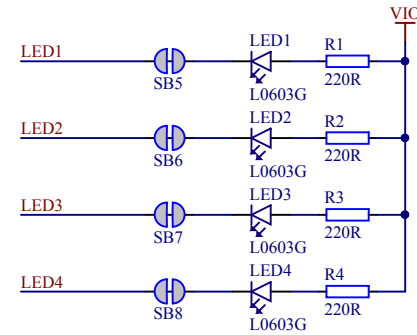
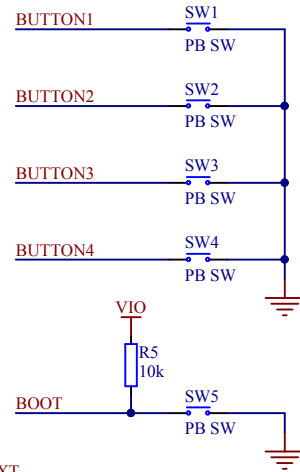
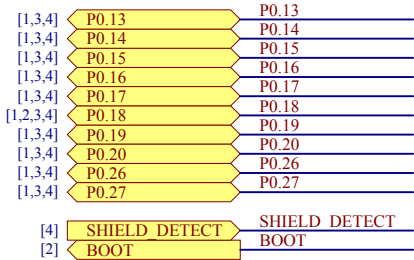




PCA10036 - Interface MCU

Size A3	Project Number 4397	Revision 1.1.0	
Date: 6/15/2015		Sheet 2 of 5	
File: pca10036_sheet2_interface_mcu.SchDoc		Drawn By: KJP	





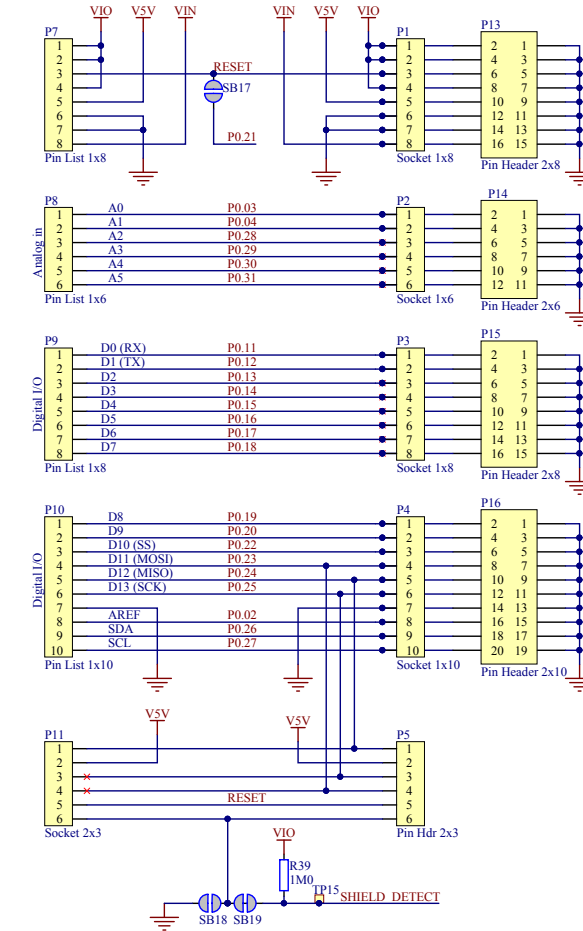
Title PCA10036 - Buttons and LEDs		Revision 1.1.0	
Size A4	Project Number 4397	Sheet 3 of 5	
Date: 6/2/2015		Drawn By: KJP	
File: pca10036_sheet3_buttons_and_leds.SchDoc			



Arduino Interface Connectors

Bottom Connectors

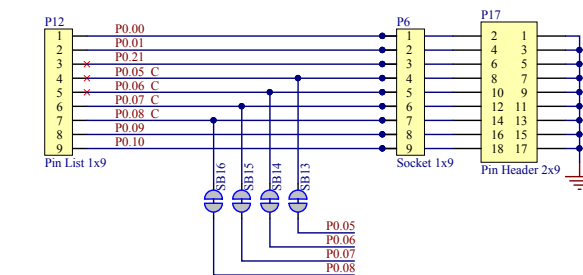
Top connectors



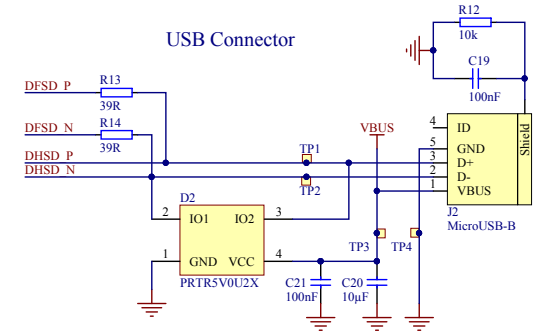
Auxiliary Connectors

Bottom Connectors

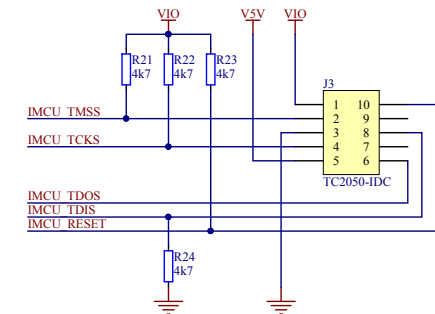
Top connectors



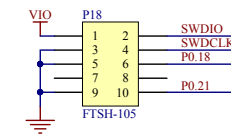
USB Connector



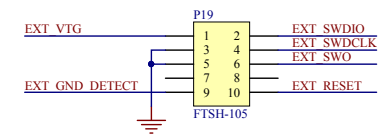
J-Link Prog Connector



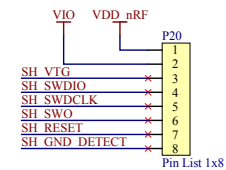
Debug IN Connector



Debug OUT Connector



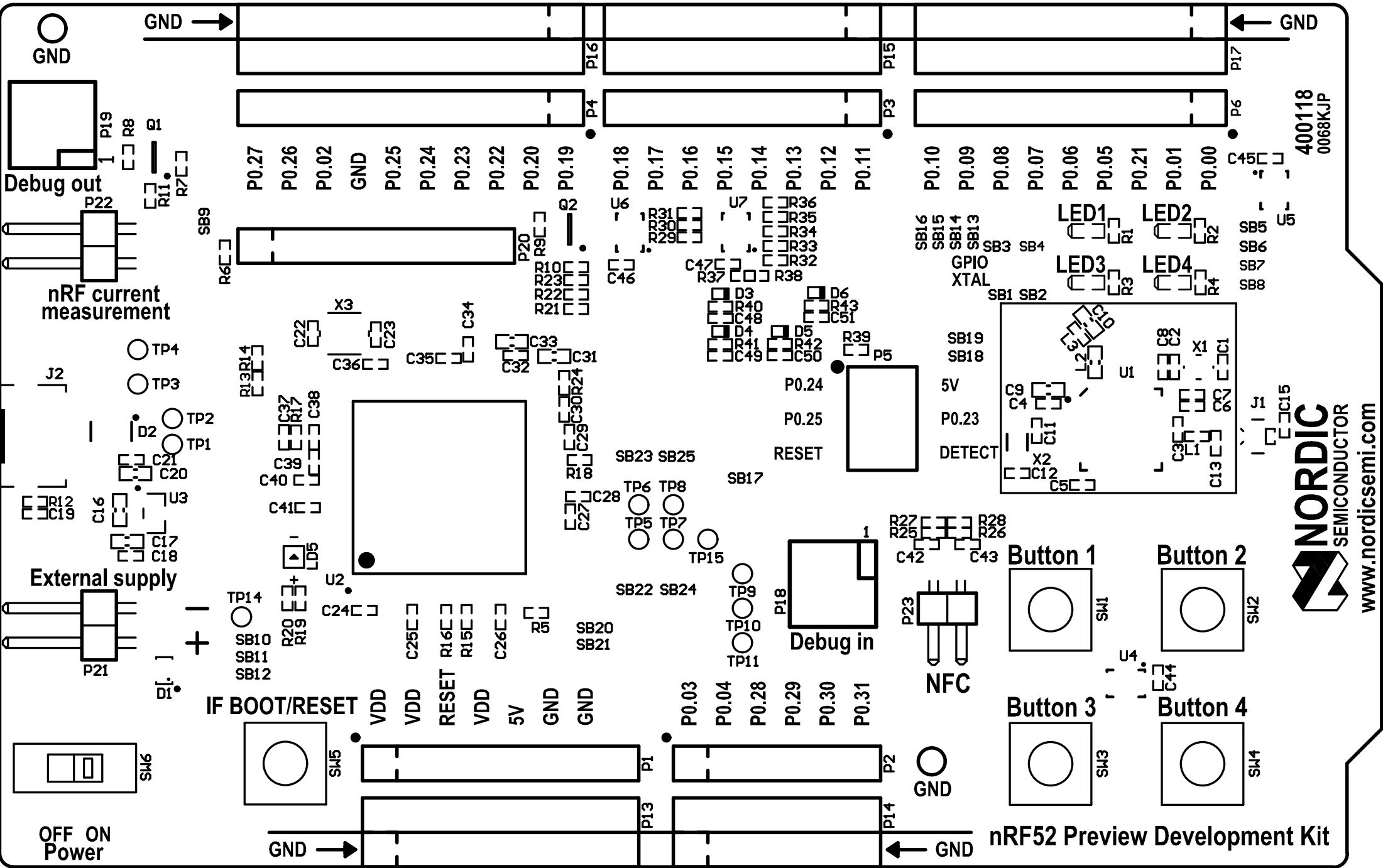
Shield Debug and Current measurement Connector




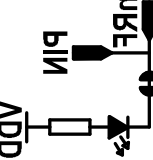



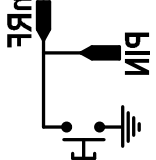
PCA10036 - Connectors

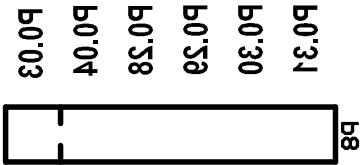
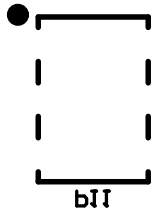
Size	Project Number	Revision
A3	4397	1.1.0
Date: 6/9/2015	Sheet 4 of 5	
File: pca10036 sheet4 connectors.SchDoc	Drawn By: KJP	



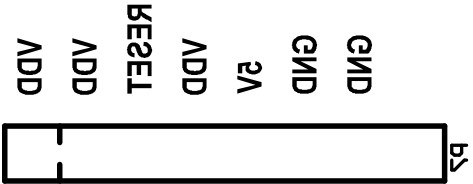




b0'50	LED 4	2B8		
b0'10	LED 3	2B1		
b0'18	LED 5	2B6		
b0'12	LED 1	2B2		
b0'16	Button 4			
b0'12	Button 3			
b0'14	Button 5			
b0'13	Button 1			
GPIO	Function	Signal	HW	
uRF525 target				

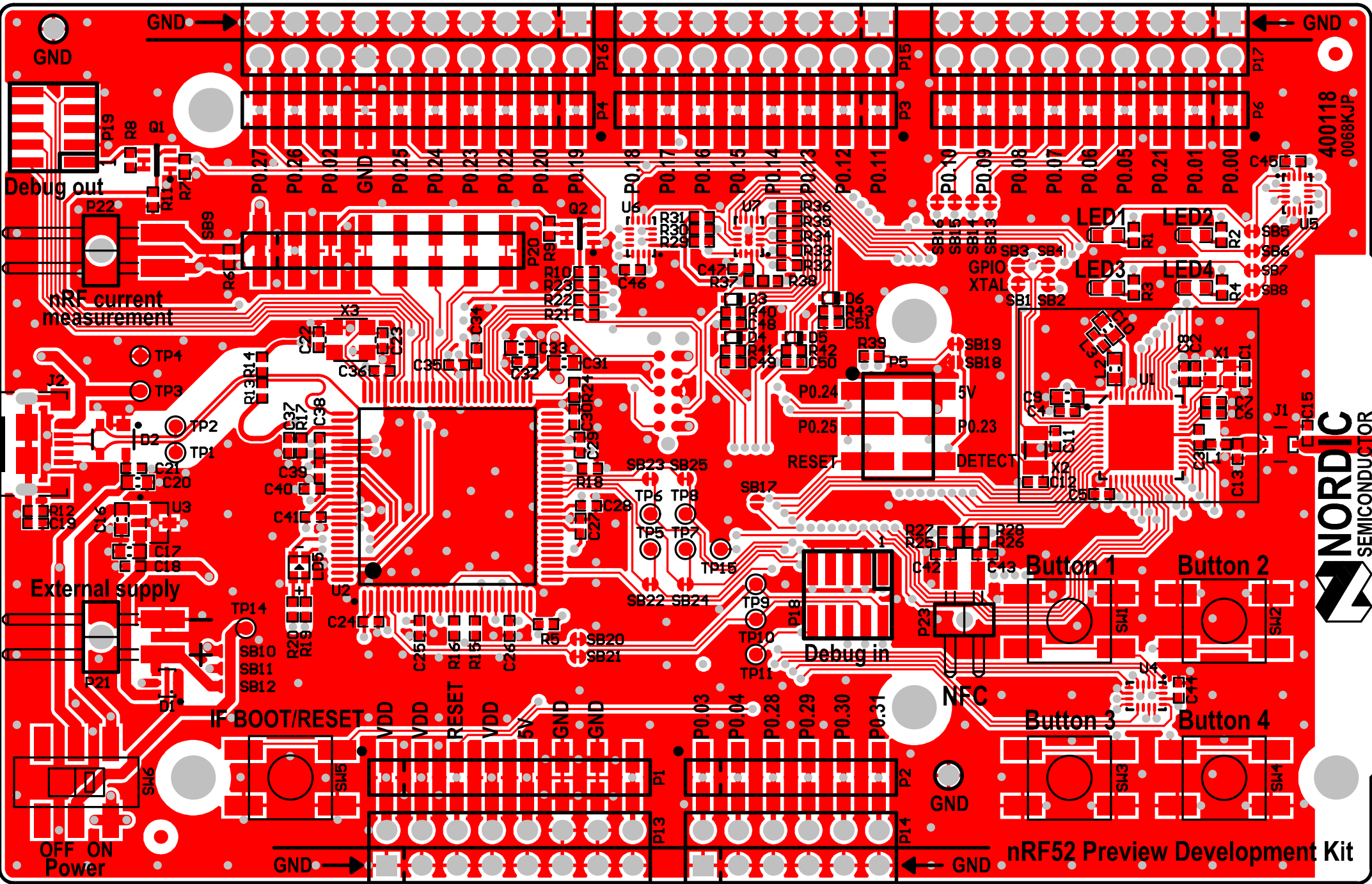


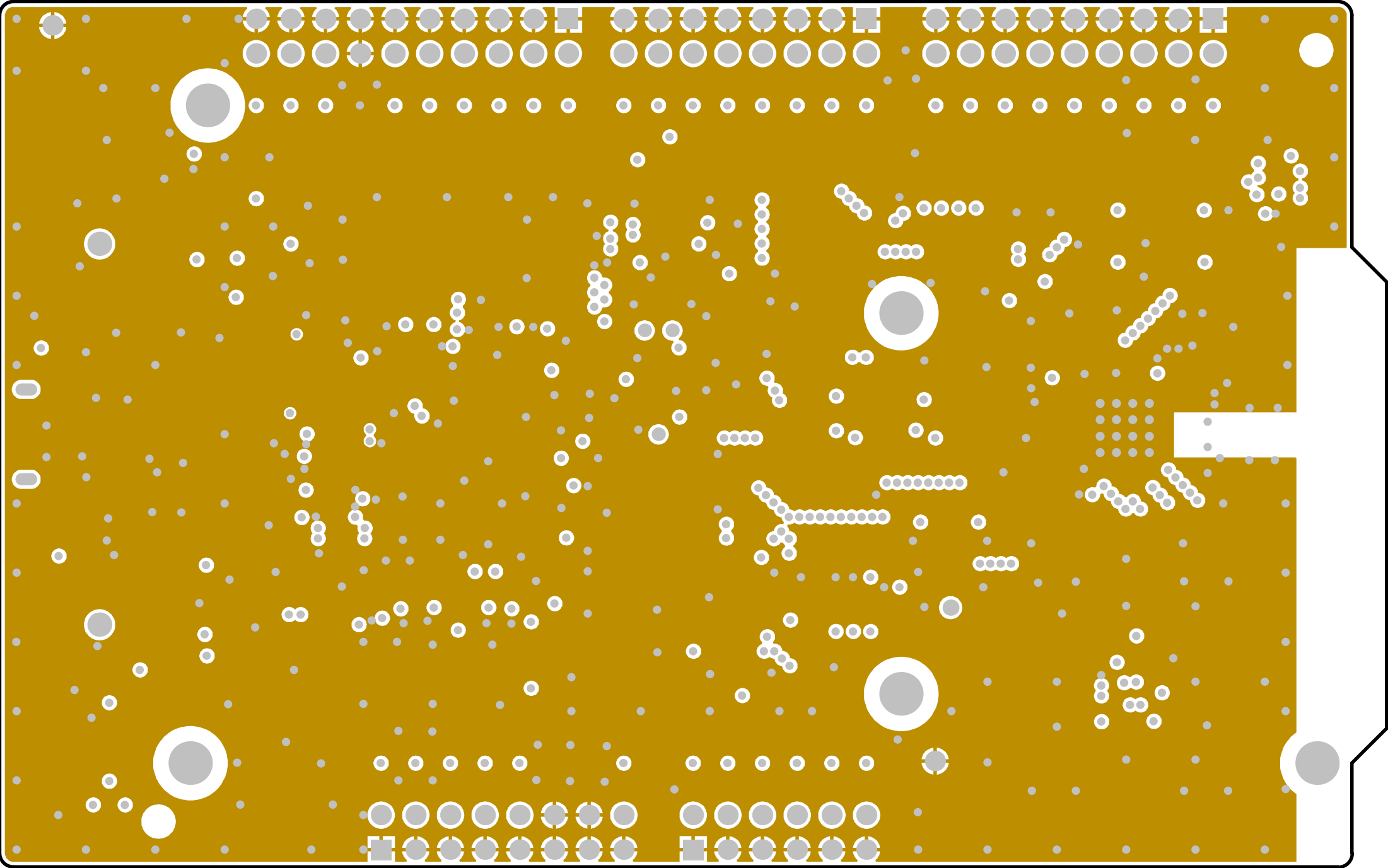
b0'10	NEC5		
b0'08	NEC1		
b0'08	RXD	2B16	
b0'02	CL2	2B12	
b0'06	LXD	2B14	
b0'02	RL2	2B13	
b0'01	XT5	2B3	
		2B1	
		2B4	
b0'00	XT1	2B5	
GPIO	Function	Signal	HW
uRF525 target			

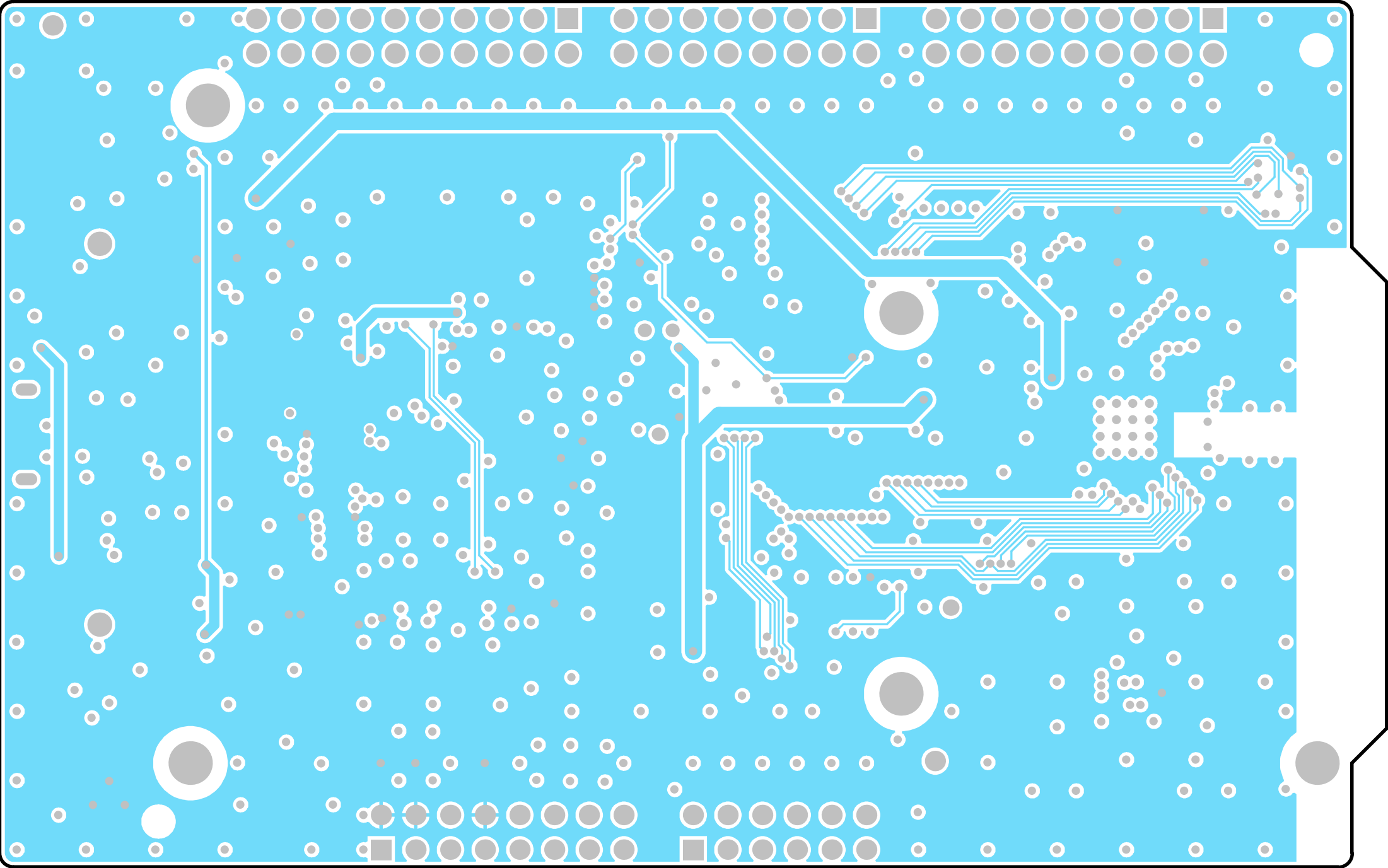






www.segger.com
J-Link™ Technology

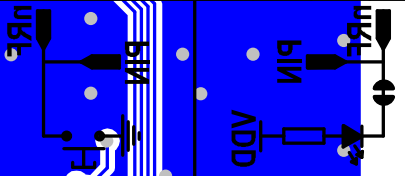
168













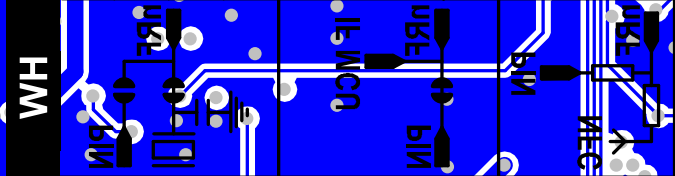


b0.50	LED 4	SB8	
b0.18	LED 3	SB7	
b0.18	LED 5	SB6	
b0.17	LED 4	SB5	
b0.16	Button 4		
b0.15	Button 3		
b0.14	Button 5		
b0.13	Button 1		

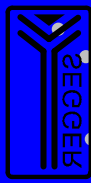
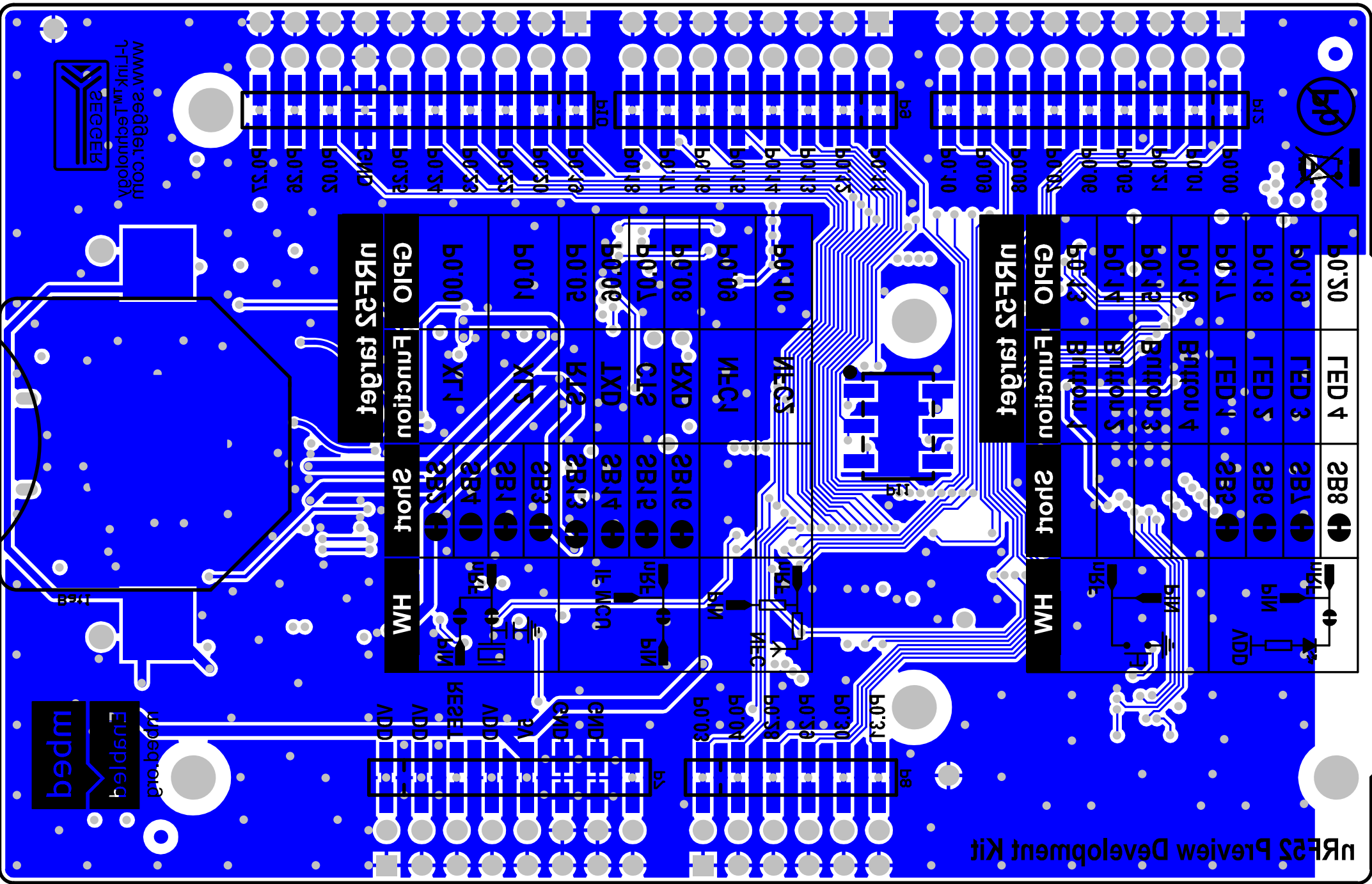


GPIO	Function	Short	HW
uRF52 target			

b0.10	NEC5		
b0.08	NEC1		
b0.08	RXD	SB18	
b0.07	CTS	SB15	
b0.06	LXD	SB14	
b0.05	RTS	SB13	
b0.04	XT5	SB1	
b0.00	XT1	SB5	

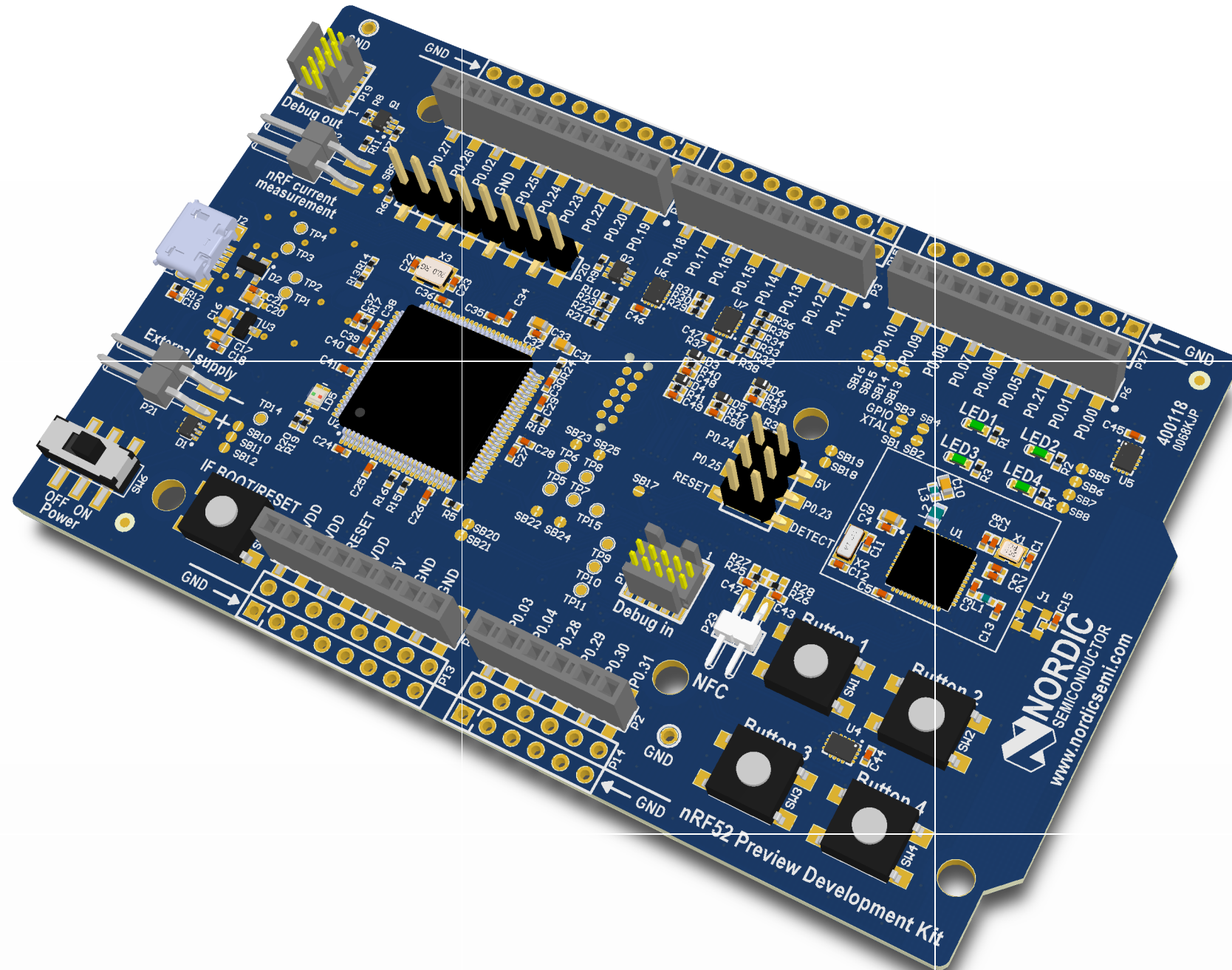


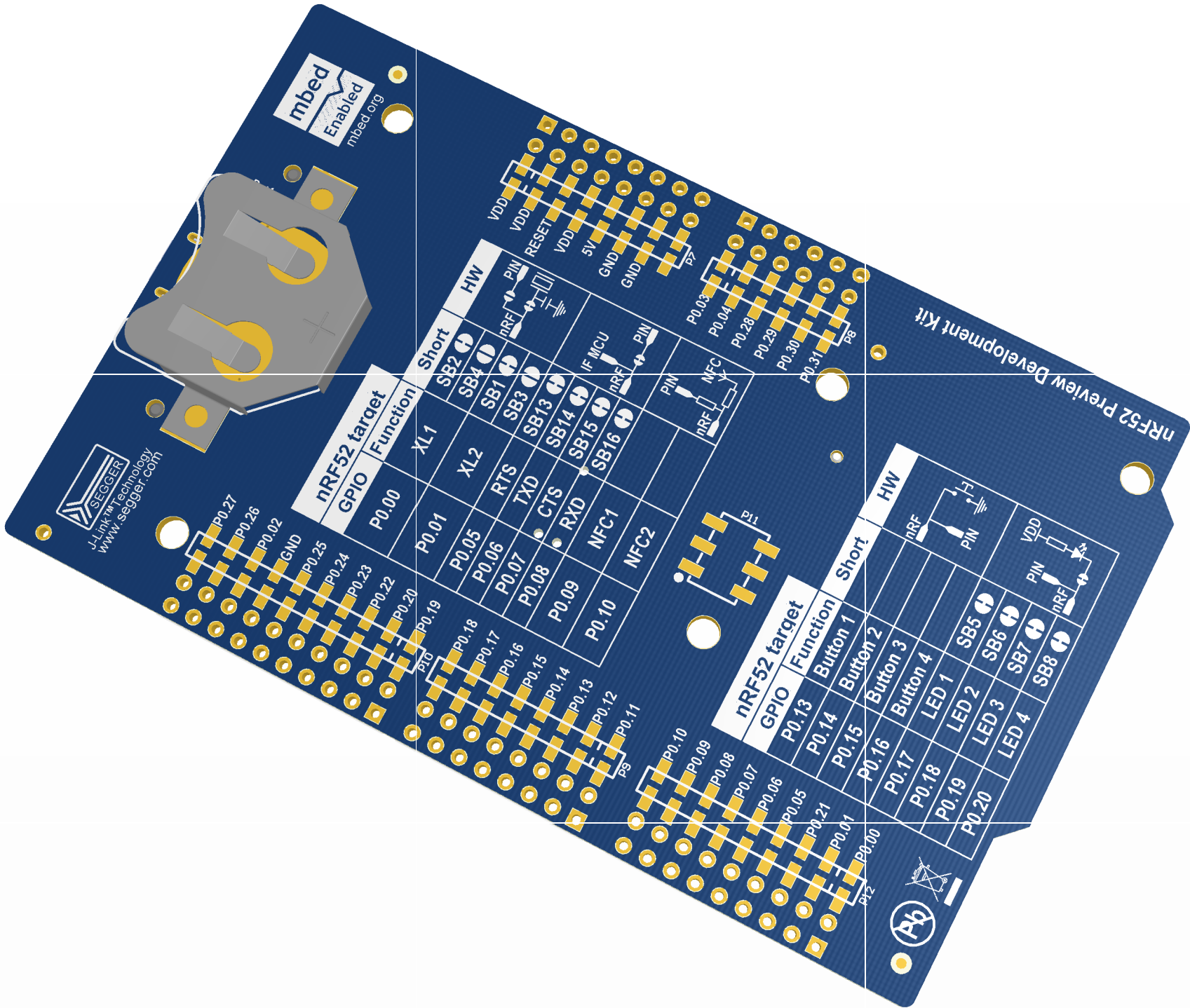
GPIO	Function	Short	HW
uRF52 target			



www.segger.com
J-Link™ Technology

mped
Ensplied
mped



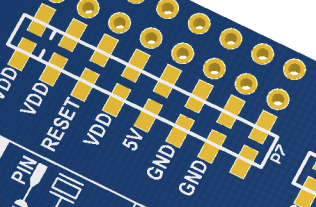


SEGGER
J-Link nRF52 Technology
www.segger.com

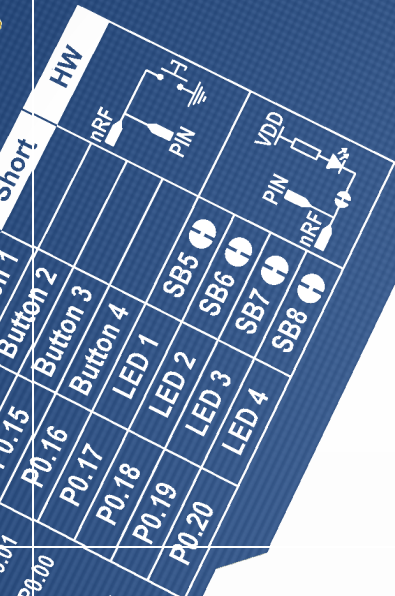
mbed
Enabled
mbed.org

nRF52 target		
GPIO	Function	Short
P0.00		

nRF52 target		
GPIO	Function	Short
P0.01	XL1	SB2
P0.05	XL2	SB4
P0.06	RTS	SB1
P0.07	TXD	SB3
P0.08	CTS	SB13
P0.09	RXD	SB14
P0.10	NFC1	SB15
	NFC2	SB16



nRF52 target		
GPIO	Function	Short
P0.13	Button 1	
P0.14	Button 2	
P0.15	Button 3	
P0.16	Button 4	
P0.17	LED 1	
P0.18	LED 2	
P0.19	LED 3	
P0.20	LED 4	



nRF52 Preview Development Kit